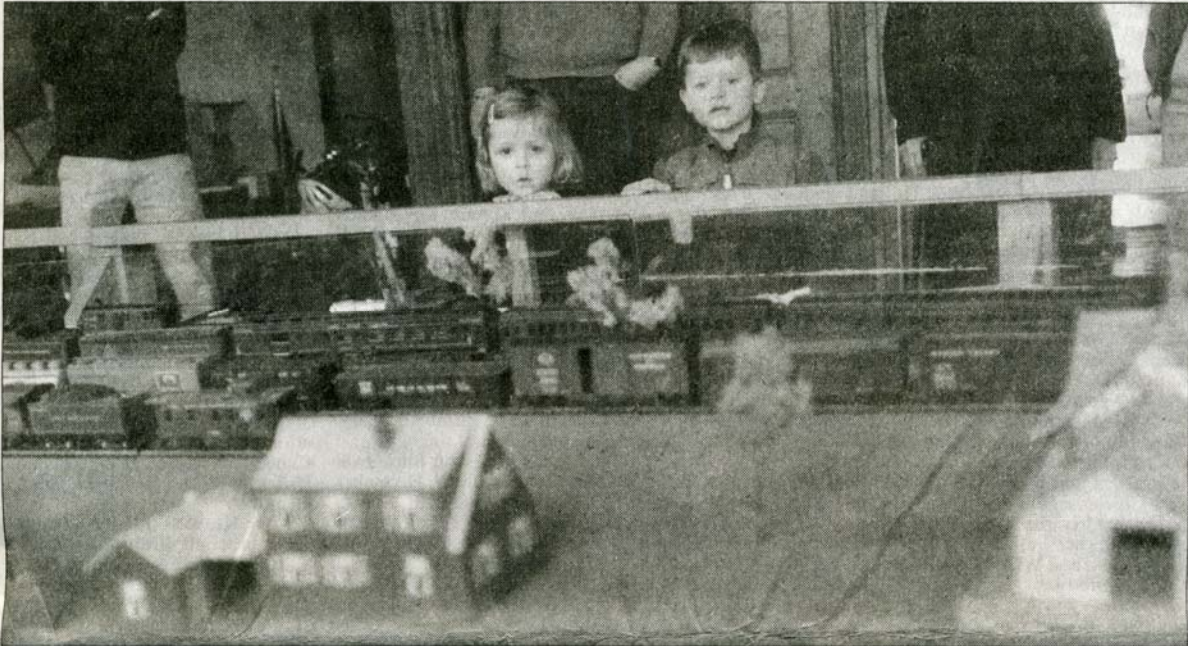


TRAINS ROLL INTO CHILDREN'S MUSEUM



Photos by NICOLE L. CVETNIC / Observer-Dispatch

Anna Sterling, 3, and brother Luke Sterling, 4, of Gippsland, Australia, watch Thursday as a model train passes by at a new exhibit in the Children's Museum in Utica. The Sterlings are visiting family in West Winfield. Robert LaPorte, of Verona, donated the exhibit in his will.

Utica exhibit expands

By NICOLE L. CVETNIC
Observer-Dispatch
ncvetnic@uticaod.com

UTICA – A new exhibit at the Children's Museum is all about trains.

About 15 people gathered Thursday morning on the fourth floor for the unveiling of model train exhibit, which features an interactive train display and railroad memorabilia from the late Richard LaPorte's estate.

LaPorte, 78, of Verona, died last November, leaving his entire HO Scale train collection to the museum for educational purposes. HO Scale is the most common size for models worldwide.

"This is just another indication of the wonderful community we have," said Marlene Brown, executive director of the museum, when speaking about LaPorte's donation. "And we plan to keep adding to it."

Children can use a foot pedal to control the movement of the train display. They also can view photographs of LaPorte and see antique railroad lanterns and signs.

Museum hours are 9:15 a.m. to 1:45 p.m. Monday, Tuesday, Thursday and Saturday through Dec. 31.



Makylah Maclin, 3, of Utica, giggles Thursday while watching a model train go by following a ribbon-cutting ceremony at the Children's Museum.

Check our Online Calendar for correct opening hours! <http://www.museum4kids.net>